



Ultra-TrackPan® Installation Instructions

06/04/04 Rev. 3

Before beginning the installation process, a detailed review of your Ultra-TrackPan order is recommended to make sure that all items have been received and are not damaged. Please refer any questions or problems immediately to your UltraTech Distributor or to UltraTech International, Inc., at (800) 353-1611. Do not attempt to install your TrackPan System if any parts are missing or damaged.

All installation personnel should read this document titled “Ultra-TrackPan Installation Instructions” in its entirety BEFORE the installation process begins.

UltraTech International, Inc. has produced a video to help assure that Ultra-TrackPans are installed properly. The “Ultra-Track Pan Installation Video” is available at no charge. This item is also available as a CD-Rom. We recommend that all installation personnel view the video in its entirety BEFORE the installation process begins. Contact your local distributor or UltraTech International, Inc. at (800) 353-1611 or fax (904) 292-1325 to receive a copy of the free installation video. We can also be reached by e-mail at info @spillcontainment.com.

NOTE: Proper personal protection equipment must be worn while installing Ultra-TrackPans. All safeguards must be taken to insure that the area of track where installation is to take place will have no rail traffic or other activity that may present hazards to installation personnel. All applicable OSHA, DOT and other governing regulations must be followed. UltraTech International, Inc. is not responsible in any manner for equipment, property or personnel used in the TrackPan installation process.

THE FOLLOWING INSTALLATION INSTRUCTIONS HAVE BEEN PREPARED WITH THE ASSUMPTION THAT A COMPLETE TRACKPAN SYSTEM (i.e., Center TrackPans with Grates and Covers, Side TrackPans with Grates and Covers) IS BEING INSTALLED. IF, AS AN EXAMPLE, YOUR INSTALLATION REQUIRES CENTER TRACKPANS ONLY, DISREGARD ALL REFERENCES TO THE INSTALLATION OF SIDE TRACKPANS. LIKEWISE, IF YOUR INSTALLATION DOES NOT REQUIRE COVERS, DISREGARD ALL REFERENCES TO THOSE ITEMS.

Tools Required to Install Ultra-TrackPans

1. Metal Rake
2. House Broom
3. Two (2) Shovels (1 Flat, 1 spade)
4. Sledge Hammer (8 pound)
5. Circular Saw (7¼ inch)
6. Wood cutting blade for circular saw
7. Metal Cutting (abrasive) blade for the circular saw (May not be needed.)
8. Metal pry bar
9. Channel Lock pliers (12 inch)
10. Drill motor with #2 Phillips bit
11. Tape measure
12. Carpenter's yellow marking crayon
13. Two (2) bar clamps (deep reach with 12" opening) (deep reach bar clamps are available through W.W. Grainger, catalog # 4CN60.)

Additional Materials needed for installation:

1. Two (2) wooden support boards: 1" x 4" x 4'
2. Two (2) pieces of lumber: 2" x 4" x 8'
3. Two (2) "slip sheets": approximately 10" x 60"
(Recommended material: reinforced polyethylene sheet; sold as "All Purpose Tarps" in home improvement stores; typically blue in color; very inexpensive.)
4. Fasteners appropriate for fastening 5/4 treated lumber to the ties in your system, for example; 2 inch galvanized deck screws for wooden ties, or 2 inch concrete screws for concrete ties, or 1½ inch flat head machine screws for steel ties. There will be 2 fasteners used for each length of lumber used under your TrackPan system.

SITE PREPARATION:

1.) Before installing Ultra-TrackPans, minor preparation of the installation area is, in most cases, required. Outline the area in which the Ultra-TrackPans are to be installed. Ultra-TrackPans are approximately 4'6" in length. Multiply 4.5 x the number of center pans in your system and this will give you the approximate length of the system. With an appropriate tape measure and marking crayon, mark the beginning and end of the system on the foot of the rails. Within this area you should be able to place the eight foot 2x4 on its edge and see that it rests on the tops of the railroad ties. If it rests on ballast, weeds, and other debris then whatever is in this area needs to be removed. Before TrackPans are installed the ballast in this area needs to be flush with the tops of the ties. If your system includes Side TrackPans then the ballast on the field side of the rails will need to be level to the top of the ties and out two to four feet from the ends of the ties depending on the width of the Side TrackPans used in your installation.

2.) Joint Bars hold two pieces of rail together. They are typically placed on the gauge side and field side of the rail web and are bolted together with six bolts (three bolts facing in towards the middle of the track and three facing out.) Where possible, remove joint bars and the bolts and weld rails together. If this is not possible inspect joint bars and the bolts and make sure they are fully tightened using an appropriate wrench. Once they are securely tightened, place the metal cutting blade on the circular saw, and with proper hearing and eye protection, cut off the excess threads of these bolts. If your system only contains Center TrackPans then the bolts facing out do not need to be cut off.

3.) Rail anchors prevent the rails from moving on the railroad ties as the locomotive pulls and stops the train. You will notice them in the area between the rails. Usually they are opposite one another and adjacent to the ties. Depending on your situation these anchors may need to be removed and replaced with a low profile anchor or removed altogether. Contact UltraTech or the Railroad for additional guidance.

4.) Check all Railroad Spikes to see that they are all driven down tight to the foot of the rail.

5.) Remove dirt and other debris that may have collected on the inside and outside web surfaces of both rails.

6.) Finally, sweep off the tops of the ties leaving a clean surface on which to install the Ultra-TrackPan System.

GENERAL INSTALLATION GUIDELINE

With **NO** Below Grade Piping:

Ultratech recommends that all Center TrackPans be completely installed BEFORE beginning installation of the Side TrackPans. The installation of the NON-PIPED system will be more efficient as a result.

WITH Below Grade Piping:

Center TrackPans and Side TrackPans (if ordered) must be installed concurrently to allow for proper positioning of the piping and filling of the pipe trenches under the TrackPans.

Installation of Treated Lumber for Center TrackPan

1.) Remove the grates from two of the Center TrackPans (not the BEGINNING or ENDING pan). Place one pan between the rails at the beginning of the system and the other pan between the rails at the end of the system. **See picture A.** Situate both Center TrackPans so that they are equidistant from both rails. Usually there is a gap of 3/8" from the foot of each rail. Once centered, step back and notice the two 1 5/8" holes in each end wall of the pans. Now make a mark on the railroad tie directly below the center of each 1 5/8" hole. Remove the two pans. Make a gage from a block of scrap lumber that approximates the distance from the web of the rail to these marks and make a mark every four to five feet throughout the system. These marks will help keep the treated support boards aligned.



PICTURE A



PICTURE B

2.) Treated support boards of an appropriate length for your TrackPan system will be sent with your order. The boards should be placed centered along the marks made in the previous step with approximately a $\frac{1}{2}$ inch gap between the ends of the boards. Fasten the treated support boards to the ties, with an appropriate fastener for the type of tie in your system, by using one fastener near each end of each treated support board. **See picture B.**

Installation of Treated Lumber for Side TrackPan

1.) Remove the grates from two of the side pans (not the BEGINNING or ENDING pan). Place one pan on the field side of the rail at the beginning of the system and the other on the field side of the rail at the end of the system. The side of the Side TrackPan nearest the rail should line up right above the foot of the rail **as shown in picture C.** Make a mark on the railroad tie directly below the center of the 1 5/8" hole in the end wall of each pan. Remove the two pans. Make a gage from a block of scrap lumber that approximates the distance from the web of the rail to these marks and make a mark every four to five feet throughout the system. These marks will help keep the treated support boards centered.

2.) Treated support boards of an appropriate length for your TrackPan system will be sent with your order. The boards should be placed centered along the marks made in the previous step with approximately a $\frac{1}{2}$ inch gap between the ends of the boards. Fasten the treated support boards to the ties, with an appropriate fastener for the type of tie in your system, by using one fastener near each end of each treated support board.

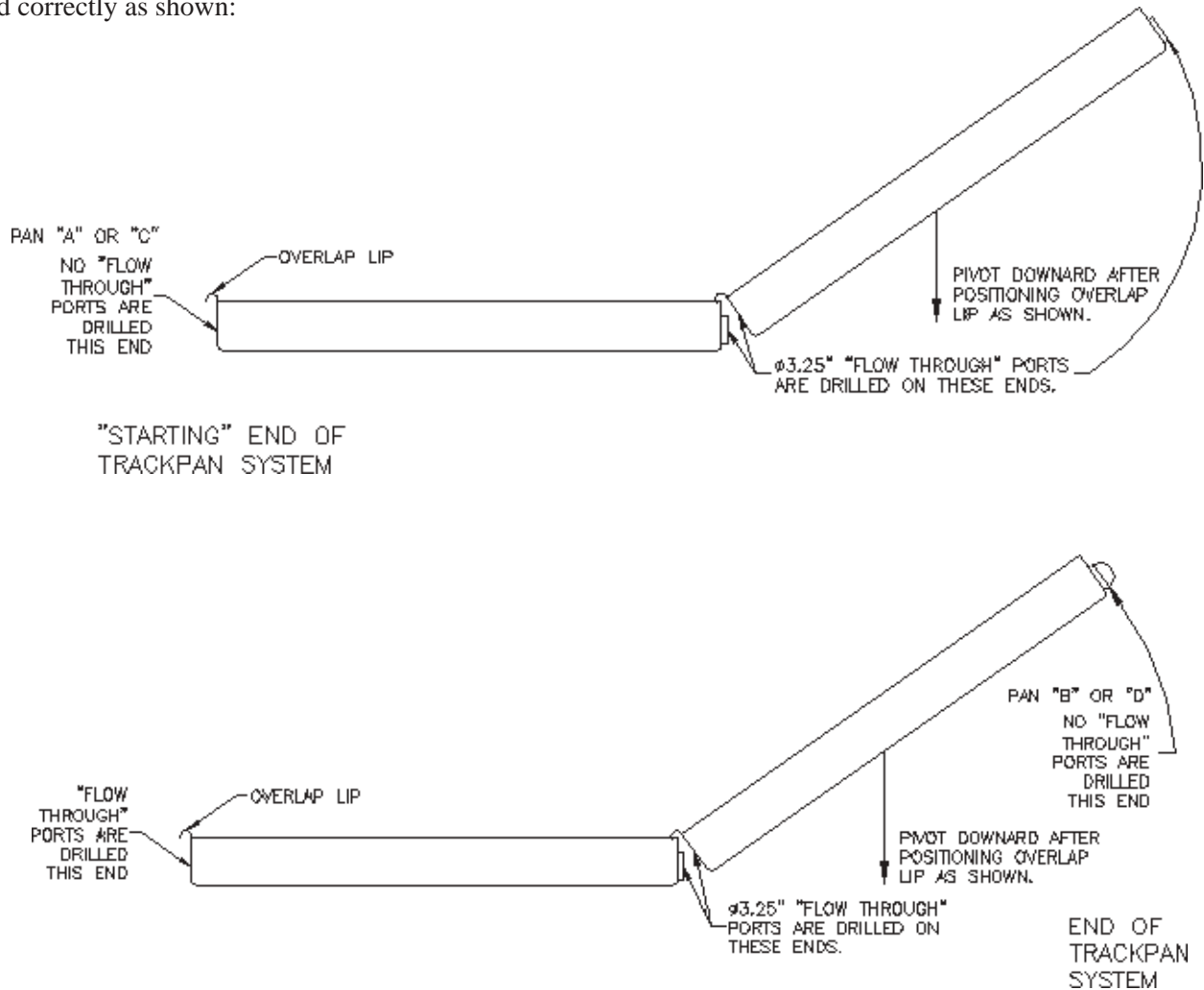


PICTURE C

Helpful Hint for the Installation of the Center or Side TrackPans

It is best to begin the installation process by positioning the Overlap Lip of the initial TrackPan to be installed at the very beginning of the TrackPan System. (See sketch below) Then place the Overlap Lip of the next TrackPan to be installed over the top of the installed Pan. The Lip allows the next Pan to “pivot” downward. Once the second Pan is laying flat on the top of the railroad ties, the “flow-through” male and female ports will be correctly aligned.

NOTE: It is important to note that your TrackPan order has been customized to meet your needs. The TrackPan walls that will be located at the very beginning and the very end of each System have **NOT** been drilled out to allow flow-through. These “non-drilled” parts are in boxes marked as END PAN “A”, “B”, “C” or “D”. Make sure that these “non-drilled” ends are positioned correctly as shown:



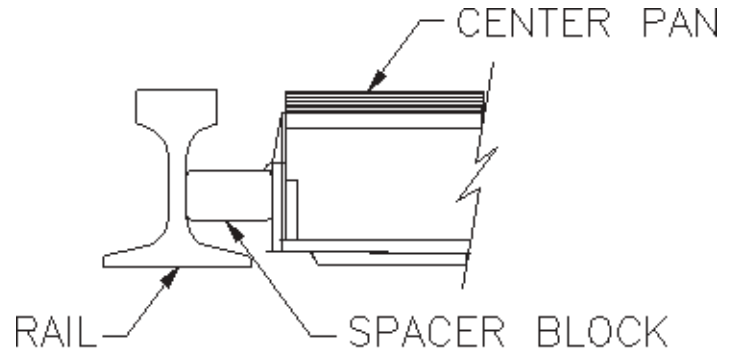
Installation of Center TrackPans

- 1.) Remove all grates from center pans.
- 2.) The BEGINNING Center TrackPan should be installed with the “overlap lip” at the STARTING END of the Trackpan System. **See picture D.**
- 3.) It is important to install the Center TrackPans so that they are centered between the two rails. This will facilitate the installation of the Center TrackPan gaskets at the end of this process. In order to keep them centered UltraTech recommends cutting two blocks of wood 6 inches long and 2⁵/₈ inches wide from a piece of 2 x 4. These blocks are to be used as spacers to keep the Center TrackPans centered between the two rails while assembling. **See sketch next to picture D.**

4.) A can of spray adhesive is provided with each shipment. Two (2) $\frac{3}{4}$ " NPT bulkhead fittings are shipped with each Center TrackPan. Each bulkhead fitting includes one (1) donut-shaped flexible gasket and a rigid washer. Spray a small amount of the adhesive around the outside of each $1\frac{5}{8}$ " diameter hole on the endwall of the first Center TrackPan and then insert the male portion of the bulkhead fittings through the hole. Place the flexible rubber gasket over the male portion and press it into the adhesive so it adheres to the outside of the endwall. **See picture E.**



PICTURE D



PICTURE E

5.) With the two (2) bulkhead fittings started through the endwall of the first Center TrackPan place the "overlap lip" of the second Center TrackPan on the endwall of the first Center TrackPan. Keep the second Center TrackPan on a 45 degree angle to begin with and slowly lower it down until the bulkhead fittings protrude through the endwall of this second pan. Three installers are best. The two kneeling in the first pan each keep a hand on the bulkhead fittings and prevent them from being dislodged by the second Center TrackPan. **See picture F.**

NOTE THAT THE BULKHEAD FITTINGS ARE REVERSE (LEFT HAND) THREADED WITH A SPECIAL (BUTTRESS) THREAD. THE NUT WILL ONLY TIGHTEN ON THESE FITTINGS IF IT IS PLACED WITH THE WORD "TIGHTEN" FACING OUTWARD AND IS TURNED IN A COUNTER-CLOCKWISE DIRECTION.



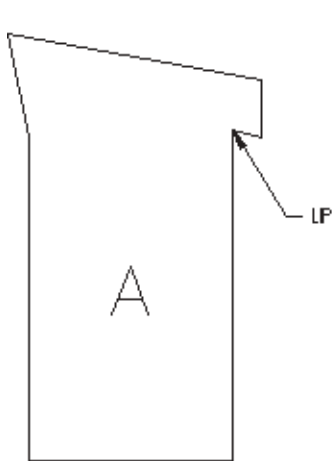
PICTURE F

6.) Once the second Center TrackPan is fully lowered, slide the rigid washer over the threaded male part and tighten the nut 1/4 turn beyond hand tight using the channel lock pliers. Do not over tighten the nut. Repeat steps 4-6 until all Center TrackPans are connected together.

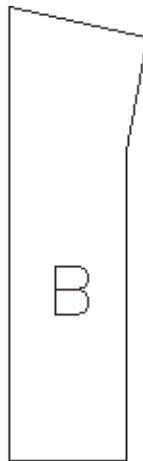
7.) Two (2) gaskets without a lip and two (2) gaskets with a lip are shipped inside the box with each Center TrackPan. One (1) gasket without a lip and one (1) gasket with a lip are considered to be a "set." The following steps will position one gasket set on each side of the Center TrackPan.

Note: there are many different sizes of rails in use. As a result, UltraTech offers various gasket configurations. Your shipment includes the correct gasket configuration to fit the rail size specified by your personnel at the time your order was placed.

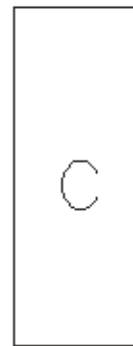
Below are the various gasket designs available from UltraTech:



ALL TRACK SIZES
USE THIS GASKET
PART# 9569



90 LB. TRACK
AND ABOVE,
USE THIS
GASKET
PART# 9568

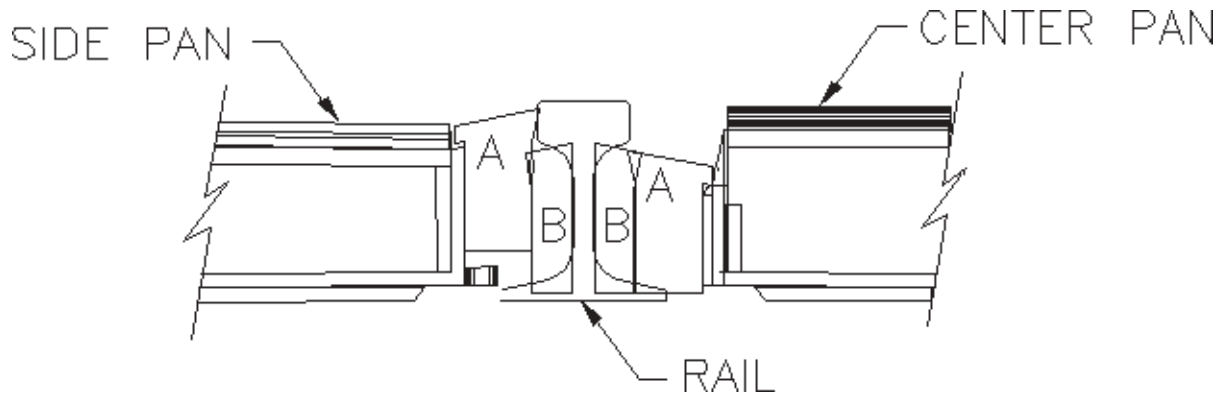


75 LB. TRACK
AND BELOW, USE
THIS GASKET
PART# 9563

Important: Refer to the appropriate sketch below as a guide for proper gasket orientation and installation.

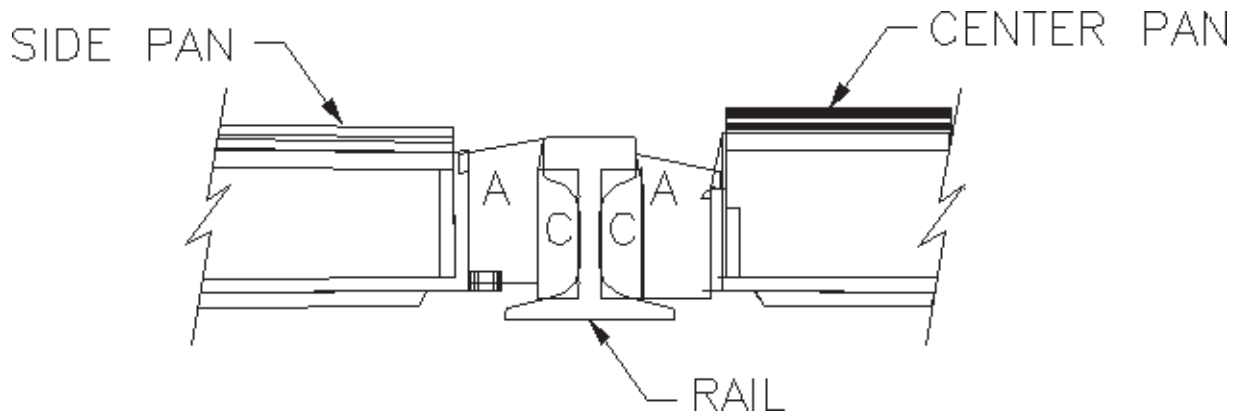
Ultra-TrackPan Gasket Configurations For Center AND Side TrackPans

A. 90 lb. Rail and Larger

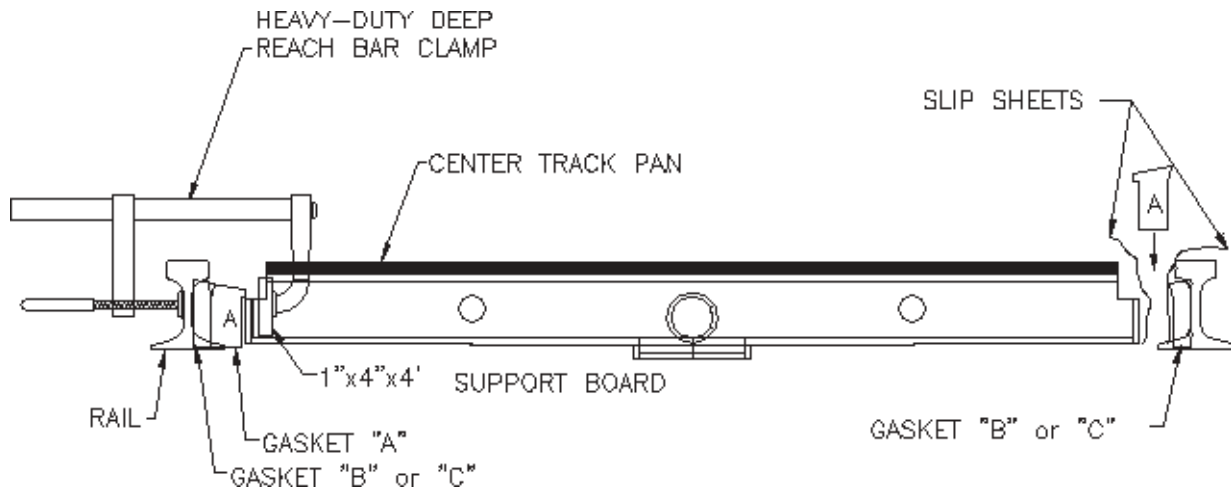


B. Rails that are Greater Than 75 lb. and Less Than 90 lb. - Contact UltraTech International, Inc. for guidance.

C. 75 lb. Rail and Smaller



8. The two (2) gaskets WITHOUT a lip are to be installed at this time. Each will fit into the rail “web”. The “web” is the recessed, vertical surface located between the base of the rail and the top of the rail. There will be plenty of space available between each side of the Center TrackPan and the rails to place these gaskets into their proper position. Make sure to position both gaskets as shown in the appropriate drawing titled “Ultra-TrackPan Gasket Configurations For Center AND Side TrackPans located on page 8. The gaskets MUST be positioned properly to allow spills that may occur on top of or near the tracks to be channeled effectively into the Center TrackPans.
9. The two (2) gaskets WITH a lip are to be installed at this time. Each will be positioned to fill the gap between the outer side wall of the Center TrackPan and the already-installed gasket. The first gasket is put into place by shifting the Center TrackPan slightly toward the opposite side. Refer to the drawing located on page 8 titled “Ultra-TrackPan Gasket Configurations For Center AND Side TrackPans” for proper position of the gaskets.
10. At this time, the two (2) bar clamps and one (1) support board will be used to temporarily compress the already-installed gasket set allowing more convenient installation of the fourth gasket. Position the board and clamps as shown below.



NOTE: One bar clamp should be positioned approximately 10" from each end of the board.

- Hand tighten both bar clamps until the combination of the two (2) already-installed gaskets compress by approximately 3/8". The fourth and final gasket for this Center TrackPan will now be installed.
- Position both “slip sheets” as shown in the diagram above.

NOTE: - VARYING DISTANCE BETWEEN RAILS: The distance between rails can vary by as much as 1/2". If the distance between the rails you are working on is at the low end of the distance range, the fourth gasket will be an extremely tight fit. Use a block of wood or other blunt (wrapped with several layers of duct tape) device to apply pressure from above to fit the fourth gasket into its correct location.

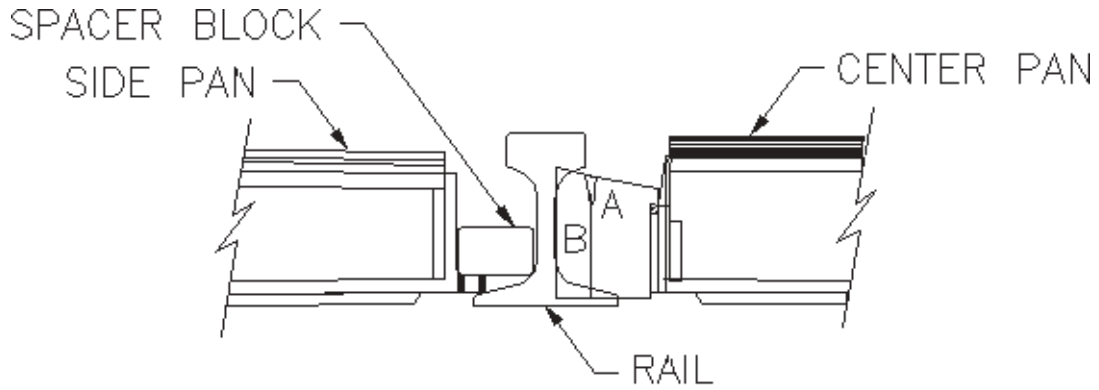
- Press the fourth gasket into place between the “slip sheets” as shown in the diagram above.
- While holding the fourth gasket in its correctly installed position, pull the “slip sheets” out vertically, one at a time.

At this time, remove both bar clamps and the support board.

Installation of Side TrackPans

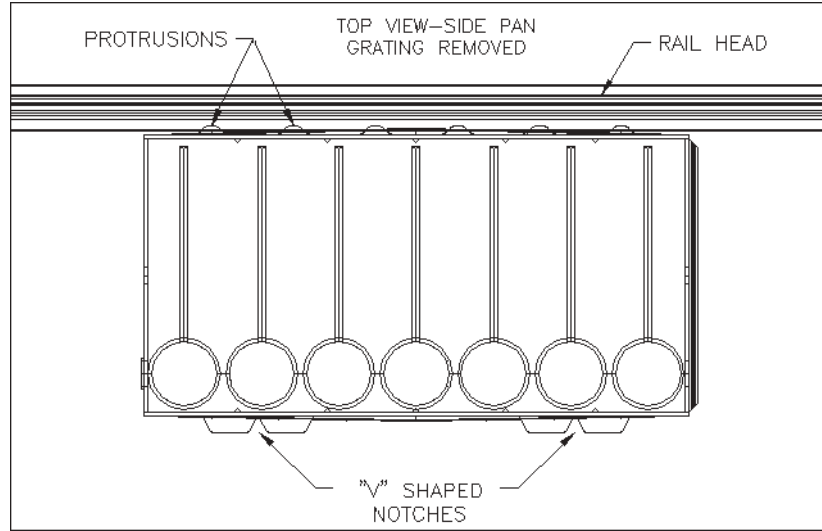
1.) Remove all grates from Side TrackPans.

2.) Cut two (2) blocks of wood 6 inches long and 2½ inches wide from a piece of 2 x 4. The 2½ inch dimension is the one needed. Place two (2) of these blocks between the Side TrackPan and the rail effectively creating a space of 2½ inch from outside of rail web to the side of the Side TrackPan. **See diagram below.**



SIDE PAN SPACER BLOCK

NOTE: IT IS IMPORTANT TO NOTE THAT THERE ARE SIGNIFICANT DESIGN DIFFERENCES ON THE OUTSIDE SURFACE OF THE LONG SIDES OF THE SIDE TRACKPANS. ONE (1) SIDE HAS SIX (6) EQUALLY-SPACED PROTRUSIONS NEAR THE BOTTOM EDGE. THIS IS THE SIDE THAT MUST BE POSITIONED TOWARD THE RAIL WEB. SEE DIAGRAM BELOW.



NOTE: The long side of the Side TrackPan that is farthest from the rails has two (2) molded, “V-shaped” notches, spaced approximately 19” apart. These molded, “V-shaped” notches will be used to fasten each Side TrackPan in place. These notches make the Side TrackPans run opposite directions on the two sides of the track. One set of Side TrackPans will start with a BEGINNING pan and the other set will start with an ENDING pan.

3.) Place the first Side TrackPan directly on the treated lumber. With two (2) 2 1/2” spacer blocks in place apply pressure with the foot by pressing the Side TrackPan up against the spacer blocks and the web of the rail. While wearing safety equipment, hammer two (2) rebar fasteners in place. The rebar should be positioned as tightly against the “V-shaped” notch as possible. It is important to apply constant pressure on the rebar against the “V-shaped” notch as it is being driven into the ballast. The rebar should be driven in so that the top of the rebar leans slightly toward the center of the track and the top of the rebar should be at the same height as the sidewall of the Side TrackPan. Protective caps must be placed on the exposed ends of the rebar for safety reasons. **See Picture G.**

Move the spacer blocks to be ready for the next Side TrackPan.

If the tracks in question are built on other surfaces such as concrete, appropriate fasteners will need to be specified to secure the Side TrackPans in place. Please contact UltraTech International, Inc. with any questions or needs related to proper fastening of Side TrackPans.



PICTURE G

NOTE: Most tracks are secured to wooden railroad ties. The ties typically rest on ballast (rocks) to provide secure footing. The soil below the ballast is engineered to withstand the dynamics associated with rail activity. UltraTech recommends using 24” long rebar pieces to secure Side TrackPans in place. Protective Caps must be placed on the exposed ends of the rebar for safety reasons. (These items are available from your UltraTech distributor. Part # 9584 is comprised of 20 rebar pieces and 20 protective caps.)

WARNING: BEFORE penetrating the soil or any other material found below grade near the rails, you must verify that the subsurface is free and clear of any obstructions that may present a hazard. It is important to review the area thoroughly to establish that no steam lines, gas lines, electrical, plumbing or other items are located in the pathway of the rebar fasteners or any other fasteners used to complete the installation of the Ultra-TrackPans.

4.) A can of spray adhesive is provided with each shipment. One (1) 3/4” NPT bulkhead fitting is shipped with each Side TrackPan. Each bulkhead fitting includes one (1) donut-shaped, flexible gasket and a rigid washer. One (1) hole has been drilled in each end wall of every Side TrackPan, except Pan “C” and Pan “D”.

NOTE THAT THE BULKHEAD FITTINGS ARE REVERSE (LEFT HAND) THREADED.

At the end of the Side TrackPan that is already in place, spray a small amount of adhesive around the outside face of the hole. Then insert the male portion of the 3/4” bulkhead fitting through the hole. Place one (1) flexible gasket over the threaded male portion and lightly press it into place against the adhesive. The donut-shaped gasket must be centered over the hole.

5.) While one installer kneels inside the first Side TrackPan with his hand pressing on the bulkhead fitting so that it will not be dislodged, the second installer places the second Side TrackPan so that the overlap lip and the bulkhead fitting being held by the first installer will be properly engaged as the second Side TrackPan is lowered into position. Once this is accomplished, the first installer installs the rigid washer and nut inside the second Side TrackPan. **NOTE THAT THE BULKHEAD FITTINGS ARE REVERSE (LEFT HAND) THREADED WITH A SPECIAL (BUTTRESS) THREAD. THE NUT WILL ONLY TIGHTEN ON THESE FITTINGS IF IT IS PLACED WITH THE WORD “TIGHTEN” FACING OUTWARD AND IS TURNED IN A COUNTER-CLOCKWISE DIRECTION.** The nut is tightened 1/4 turn beyond hand tight using the channel lock pliers. Do not overtighten the nut. **See Picture H.**



PICTURE H

Repeat SIDE TRACKPAN INSTALLATION STEP #3 to secure the Side TrackPan with rebar fasteners.

Repeat SIDE TRACKPAN INSTALLATION STEPS 1 - 5 to install all remaining Side TrackPans required to complete this side of the TrackPan System.

6.) One (1) gasket without a lip and one (1) gasket with a lip are shipped inside the box with each Side TrackPan. One (1) gasket without a lip and one (1) gasket with a lip are considered to be a “set.” The following steps will position one gasket set between the rail and its adjacent Side TrackPan side.

7.) For 90 lb. rails and larger place gasket “B” against the web of the rail. Butt the ends of all gasket “B” pieces together at the joints where the pans meet. For 75 lb. rails and smaller use gasket “C.” Both of these gaskets are without a lip. Each will fit against the rail “web.” The “web” is the recessed, vertical surface located between the base of the rail and the top of the rail. There will be plenty of space available between the side of the Side TrackPan and the rail to place these gaskets into their proper position. Make sure to position both gaskets as shown in the appropriate drawing titled Ultra-TrackPan Gasket Configurations found on page 8. The gaskets **MUST** be positioned properly to allow spills that may occur on top of or near the tracks to be channeled effectively into the Side TrackPans.

8.) Place the two polyethylene slip sheets in between the gasket and the sidewall of the Side Trackpan. Insert the gasket with the lip in between the two slip sheets. The lip should be facing out away from the rail to allow liquids to flow into the Side TrackPans. Make certain to start in the middle of the Side TrackPan and work toward each end. Apply downward pressure utilizing a 2 foot piece of 2x4 with one end wrapped with several layers of duct tape. The tape will dull the sharp edges of the end of the 2x4 and prevent tearing the gasket material. **See Picture I.**

9.) While holding the gasket in its correct position, pull the “slip sheets” out vertically, one at a time.

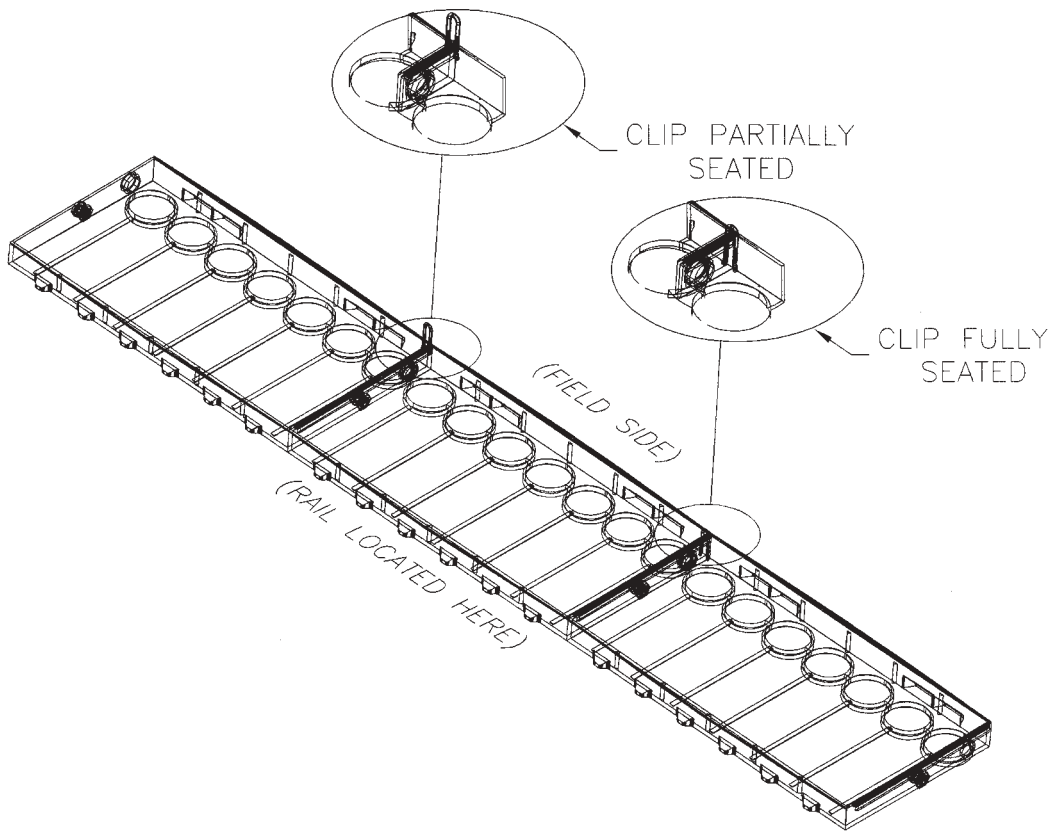


PICTURE I

10 a.) **System with NO below grade piping.** If your TrackPan System requires Side TrackPans on both sides of the rails, return to step 1 of Side TrackPan Installation and begin to install the other Side TrackPans at the opposite end of the system from where you began the first Side TrackPans.

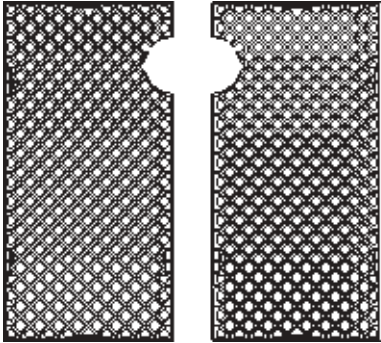
10 b.) **System WITH below grade piping.** If your TrackPan system requires Side TrackPans on both sides of the rails, return to step 1 of Side TrackPan Installation and begin to install the other Side TrackPan at the same end of the system from where you began the first Side TrackPans. Notice that this set of pans will be installed with the overlap lip facing in the opposite direction as the first set. As a result, the “back” end of each successive pan will need to be lifted into position under the overlap lip of the previously installed pan.

11.) Once the Side TrackPans have been completely installed, the last step is to install the Side TrackPan Clips. These are heavy-gauge, steel clips that are formed in the shape of a “U.” Using a rubber mallet, the clips should be located as shown below and driven on until fully seated.



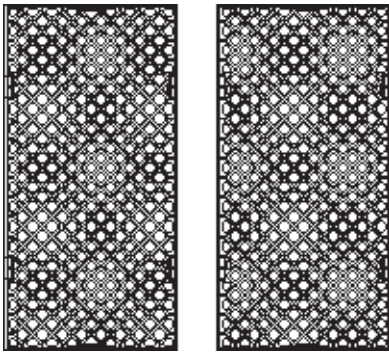
PUT GRATES BACK INTO ALL TRACKPANS

Note : All Center TrackPan Grates for use with systems with the stormwater feature have a semicircular cutout on one side. A Right and a Left Center TrackPan Grate make up a set. See diagram below. Place one (1) Center TrackPan Grate Set into each Center TrackPan. The cutouts will surround the “Stormwater Feature” when properly positioned. The Stormwater Feature is the raised, conical-shaped protrusion located in the bottom of each Center TrackPan.



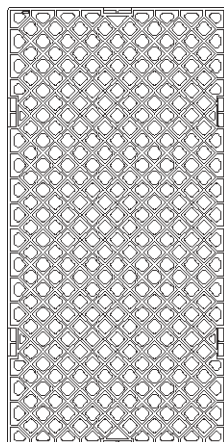
Set of Center TrackPan Grates for use with Center TrackPans that are molded with the Stormwater Feature.

Note: If your order specified that the “Stormwater Feature should NOT be molded into the Center TrackPans”, the grates provided with the Center TrackPans will NOT have a semicircular cutout. See diagram below.



Set of Center TrackPan Grates for use with Center TrackPans that are molded without the Stormwater Feature.

Note: The Side TrackPan Grates do NOT have a semicircular cutout. See diagram below. Place one (1) Side TrackPan Grate into each Side TrackPan.



Side TrackPan Grate

GASKET REVIEW

After all TrackPan modules have been installed, a visual inspection of all Center TrackPan gaskets and Side TrackPan gaskets is required.

If any “gaps” exist between the gaskets or at their joints, the gaps should be filled with silicone sealer or any other sealer that is compatible with all fluids that may potentially spill into the TrackPans and onto the TrackPan gaskets.

Please refer any related questions or problems to UltraTech International, Inc.

INSTALL TRACKPAN COVERS

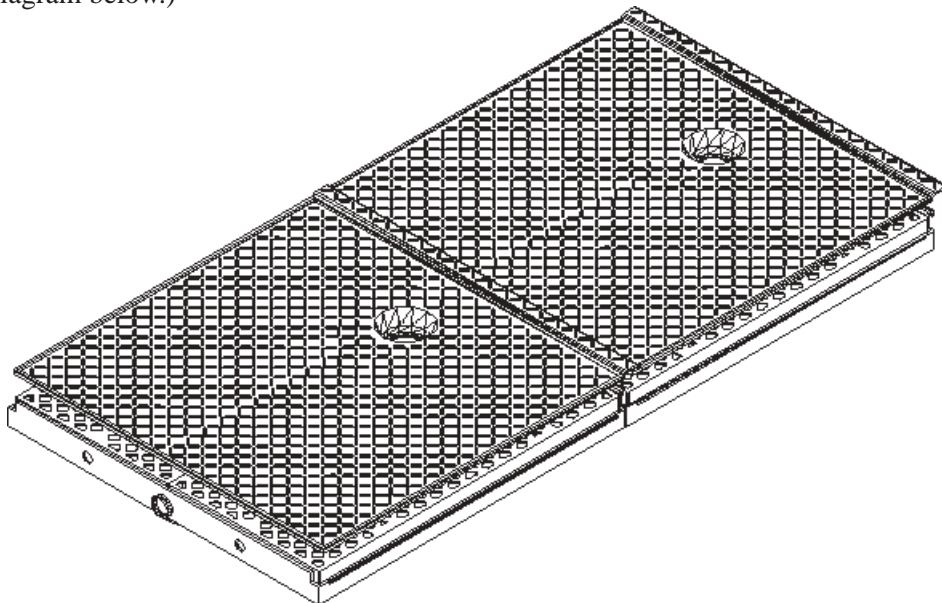
NOTE: COVERS FOR CENTER AND SIDE TRACKPANS CAN BE USED ONLY WITH GRATES INSTALLED INSIDE THE TRACKPANS. THE GRATES PROVIDE STRUCTURAL SUPPORT FOR THE COVERS. THEY ALSO PROVIDE A MEANS TO FRICTION-FIT THE COVERS IN PLACE TO REDUCE THE POTENTIAL FOR WIND BLOWING THE COVERS OFF.

CENTER TRACKPAN COVERS

The Center TrackPan Covers measure 56"L x 54"W. An “overlap lip” is molded into one (1) end of the Cover, along the 54" dimension. Each Center TrackPan Cover has four (4) molded-in “securing pegs” located on its underside. One (1) of the “pegs” is larger in diameter than the other three (3) pegs. The larger diameter peg is designed to provide a “friction-fit” inside the hole in the Center TrackPan grate that is located directly below the peg.

NOTE: Each Center TrackPan has one (1) “Stormwater Feature” that is molded into its bottom. The Stormwater Feature is conical-shaped and protrudes upward from the Center TrackPan bottom. It is approximately 4" tall, with an approximate 4 1/2" diameter. THE STORMWATER FEATURE IS LOCATED IN A POSITION THAT IS OFFSET TOWARD THE END ON THE CENTER TRACKPAN WITH THE OVERLAP LIP. Each Cover for the Center TrackPans has a molded-in “spout” that seals off around the Stormwater Feature when it is put in place.

You will observe that all installed Center TrackPans face the same direction, with their respective Stormwater Features in the same position. (See diagram below.)



Starting at the end of the Center TrackPan System that has the Stormwater Feature closest to the end, place one (1) Center TrackPan Cover on top of the grates. Make sure that the “securing pegs” are facing down. Center the Cover on top of the Center TrackPan grates. The large “spout” in the Cover will be positioned directly above the Stormwater Feature. Once centered, the “pegs” will be correctly located above their corresponding grate holes. Apply a modest amount of hand or foot pressure to friction-fit the large diameter peg into its grate hole, and to seal the “spout” gasket over top of the Stormwater Feature. The “spout” gasket should be seated just below the drain holes that are located near the top of the Stormwater Feature. The non-slip, top surface of the Center TrackPan Covers will be the exposed surface when the Covers are installed properly.

Continue installing Center TrackPan Covers following the same steps used to install the first Center TrackPan Cover. Each “overlap lip” will overlap its adjacent Center TrackPan Cover by approximately 1”.

SIDE TRACKPAN COVERS

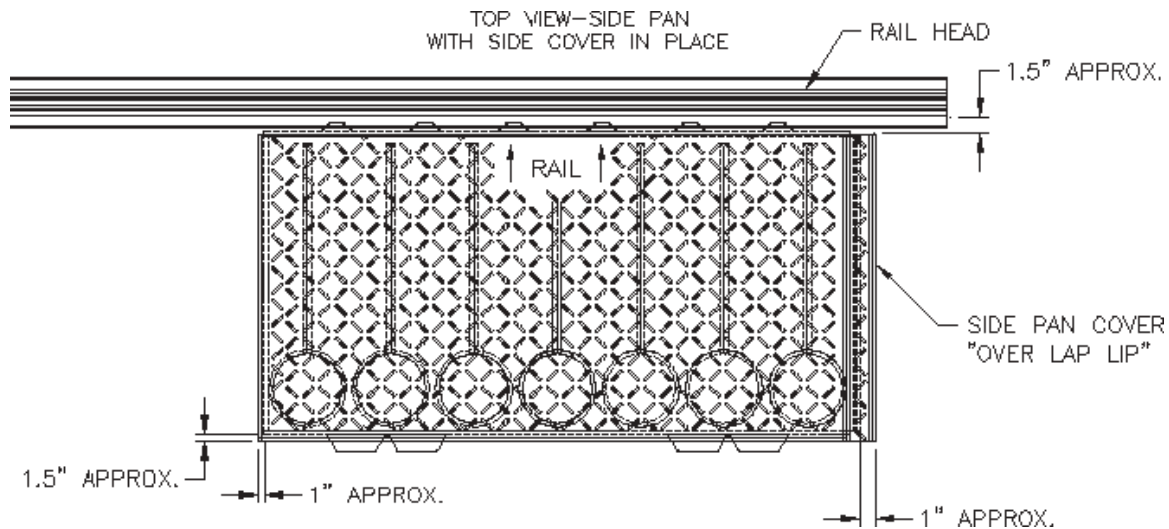
The Side TrackPan Covers measure 56"L x 27 3/4"W. An “overlap lip” is molded into one (1) end of the Cover, along the 27 3/4" dimension. Each Side TrackPan Cover has two (2) molded-in “securing pegs” located on its underside, one (1) peg with a larger diameter than the other. The large peg is designed to friction-fit inside a hole in the Side TrackPan grate.

Each Cover for the Side TrackPans has “↑ RAIL ↑” molded into its upper surface. To position Side Covers properly, THE ARROWS MUST POINT TOWARD THE RAILS.

While standing off to the side of the TrackPan System, install the first Side TrackPan Cover on the Side TrackPan located at the far right hand end of the System. Apply a modest amount of hand or foot pressure to friction-fit the large securing peg into its grate hole.

Continue installing Side TrackPan Covers following the same steps used to install the first Side TrackPan Cover. MAKE SURE THAT ALL “OVERLAP LIPS” ARE FACING THE SAME DIRECTION.

Please refer to the diagram below to assure proper installation of the Side TrackPan Covers:



Side TrackPan Covers should be positioned as follows:

- Cover should be located approximately 1.5" from the outside edge of the rail head.
- The Side TrackPan Cover “overlap lip” will overhang the end of its Side TrackPan by approximately 1”.
- The end of the Side TrackPan Cover that is opposite the “overlap lip” will overhang the end of its Side TrackPan by approximately 1”.
- The outer edge of the Side TrackPan Cover will overhang the outer side wall of the Side TrackPan by approximately 1.5”.

Ultra-TrackPan installation steps are now completed.

For future reference, refer to Appendix A for a complete list of Ultra-TrackPan Replacement Parts and Accessories.

Please refer any questions or needs to your UltraTech Distributor or:

UltraTech International, Inc.

11542 Davis Creek Court

Jacksonville, FL 32256 USA

Toll Free (800) 353-1611

(904) 292-1611

Fax (904) 292-1325

e-mail: info@SpillContainment.com

www.TrackPans.com

Appendix A

Ultra-TrackPan Replacement Parts and Accessories

<u>Description</u>	<u>Qty.</u>	<u>Part#</u>
1. Gasket "A"	1 ea.	9569
2. Gasket "B"	1 ea.	9568
3. Gasket "C"	1 ea.	9563
4. 3/4" NPT Bulkhead Fitting (includes nut, donut-shaped gasket and rigid washer)	1 ea.	1073
5. Threaded Plug for Bulkhead Fitting	1 ea.	9960
6. Center TrackPan Grate (right), with cutout	1 ea.	9572
7. Center TrackPan Grate (left), with cutout	1 ea.	9571
8. Side TrackPan Grate, also Center TrackPan Grate without cutout	1 ea.	9573
9. Adhesive Spray	1 can	9562
10. 24" Rebar with Protective Cap	20-pack	9584
11. Wrench for Bulkhead Fittings	1 ea.	0464
12. Sorbent Mats, Center TrackPan	10-pack (2/set)	9586
13. Sorbent Mats, Side TrackPan	20-pack	9585
14. Cover Cart	1 ea.	9582
15. Magnetic Track Cover	Custom sizes available.	
16. 3¼" diameter gasket to seal off large "flow throughs" in Center and Side TrackPans.		9557
17. 3" NPT Bulkhead Fitting (includes nut, donut-shaped gasket and rigid washer)	1 ea.	9559

Contact Ultratech International for additional information.

This page has been left blank intentionally.



UltraTech International, Inc.
11542 Davis Creek Court
Jacksonville, FL 32256 USA

(800) 353-1611
(904) 292-1611
Fax (904) 292-1325

e-mail: info@SpillContainment.com
www.SpillContainment.com